

TP 400 COMPACT K

Wood chipping with high capacity

TP 400 is the optimal wood chipper for production of chips in professional forestry. It has an integrated crane support and the funnel parallel with the direction of traffic. TP 400 is for fast and effective chipping of wood up to 400 mm in diameter.

TP 400 COMPACT K is designed for permanent mounting directly onto Fendt tractors in the 900 series.

The wood chipper is build to be as compact as possible and the crane is placed in front of the ejector spout on a vertical flange. This way the tractor and wood chipper will be more manoeuvre friendly and the view from the tractor is optimized.

The MOWI 400 crane for the TP 400 COMPACT K is equipped with a special flange for vertical mounting, extra strong cylinders for turning and 600 mm extended tipping arm for reach upto 6,8 m.

Standard on TP 400

- Integrated high pressure hydraulics system
- Four knives (two-knife rotor)
- Two anvils in Hardox 400
- Two hydraulically powered feed rollers which ensure a powerful feeding
- Hydraulic cylinder for backstop of moving rollers
- V-belt drive between wood chipper and tractor
- Hydraulic tension of the V-belt drive
- Wipers to ensure against accumulation of material in the rotor housing
- Changeable casing in rotor housing
- Split rotor housing with hydraulic opening
- Automatic adjustment of the roller speed with the TP PILOT K
- Rotor lock for securing the rotor disc when changing knives
- Integrated crane support
- Stress Control System TP PILOT K
- Extended ejector spout across the tractor
- All wearing parts can be changed with standard tool set
- Comprehensive manual with spare parts catalogue



TP 100

TP 130

TP 160

TP 200

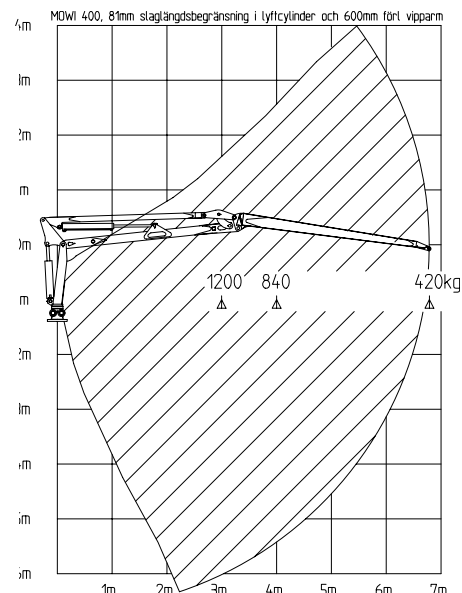
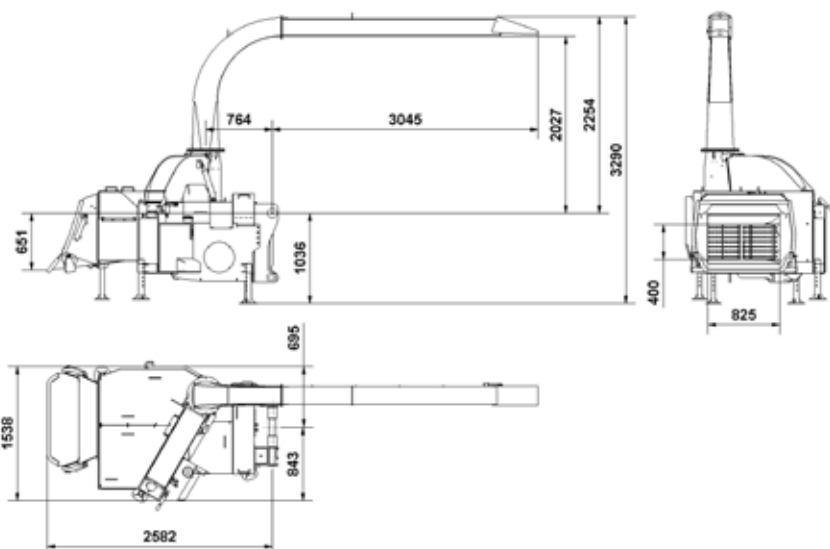
TP 250

TP 230

TP 270

TP 280

TP 400



TECHNICAL DATA

Max wood diameter	400 mm
Max opening	H x B = 400 x 440 mm
Operation	Return, forward and stop of rollers controlled from box inside the tractor
Chipper principle	Disc chipper
Chipping angle	30°
Hydraulic system	Integrated high-pressure hydraulic system with variable piston pump
In feed	2 hydraulic driven vertical in feed rollers, hydraulic compressed
Feed rollers	New toothed roller with extra strong in-feed
Number of knives	4 pcs. (2 cuts per round)
Rotor disc diameter	1.225 mm
Rotordisc - Weight in kg	756
Crane funnel	Parallel to driving direction. Made in 6 mm plates with large opening and solid Ø 40 mm edging
Crane support	Heavy flange for mounting of crane
Power required	Min. 147 kW (200 hk) - Max 294 kW (400 hp)
V-belt drive	Between wood chipper and tractor with hydraulic tightening
PTO rpm	1.170 rpm/min. (rotor = 1000 rpm/min.)
PTO shaft	Walterscheid with free wheel, lenght = 560 mm
Chip size	15-40 mm. in hard wood max. 25 mm
Changeable counter steel	1 horisontal and 1 vertical
Stress control	TP PILOT K
Wearing plate	Changable wearing plate in lower rotor housing
Chip capacity	Ca. 50-150 m³/hour
Weight	3.200 kg. without crane • with crane (MOWI 400) 4.100 kg

EXTRA EQUIPMENT

Sliverbreakers	Set with 4 pcs. -if extra requirements for chip size are requested
Ejector spout	Short ejector spout with adapter pipe
Flexible ejector spout	Hydraulic turn and electrical tip of ejector
Crane and operation	MOWI 400 VERTIKAL FLANGE (See moving diagram above)
Horizontal feeder on funnel	For problem-free infeed of bigger trunks